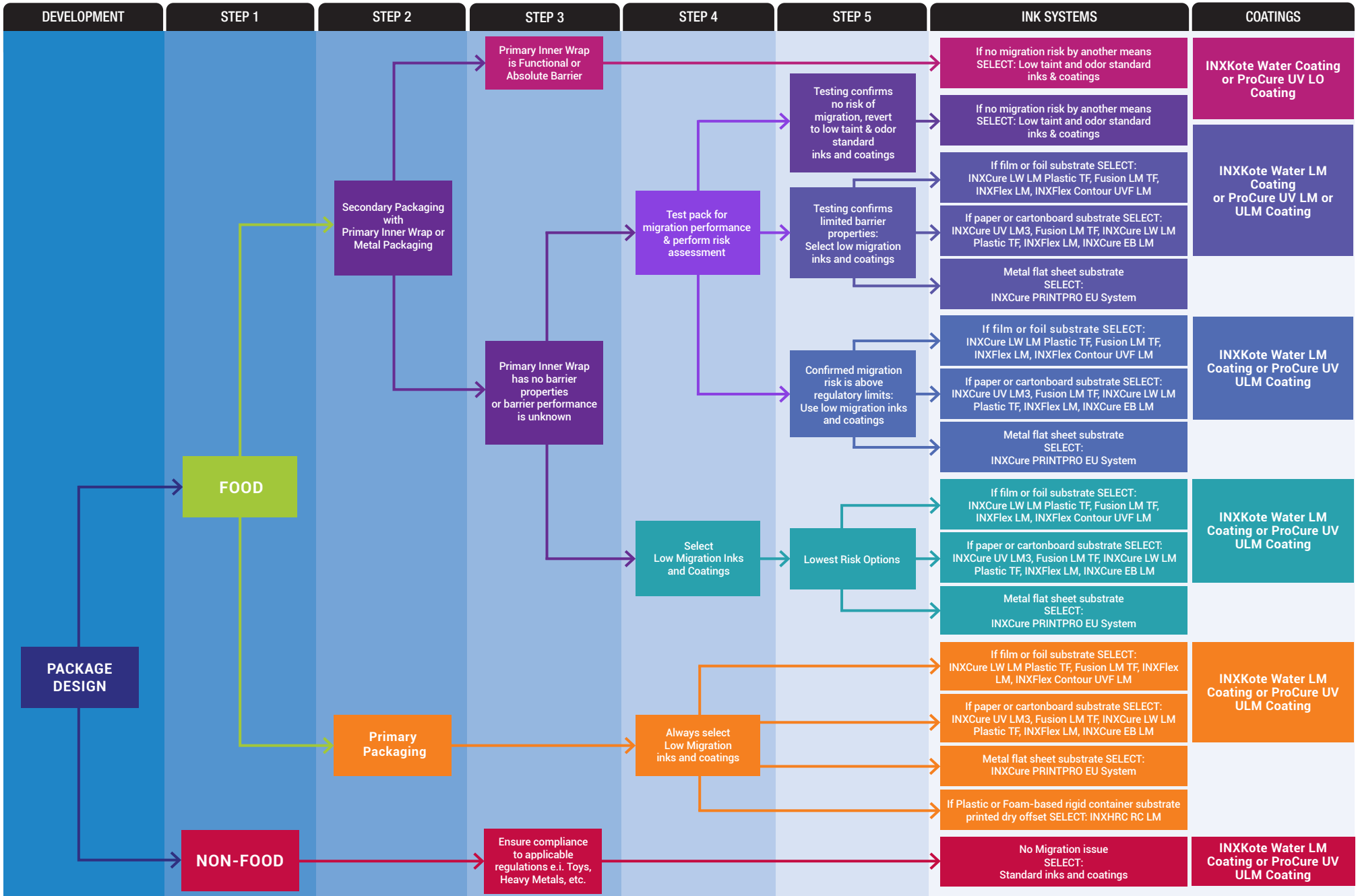


LOW MIGRATION INK & COATINGS FOR PACKAGING APPLICATIONS - PRODUCT SELECTOR GUIDE**



INX International has worked for many years on understanding the factors affecting migration and has developed a complete product portfolio of low migration inks and coatings, to support the packaging chain across a range of print processes and applications. Our Product Selector guides you through the decision making process, starting with basic risk assessment, through levels of risk to the best ink & coatings application for your product.



**The final determination of the suitability for a particular purpose is the sole responsibility of the user. Specifically, the final measurement of migration compliance is the responsibility of the printer/converter or non-consumer end user, with compliance to be determined in accordance with any applicable United States Food and Drug Administration (FDA) Regulatory Framework.

INXKOTE® SHEETFED LOW MIGRATION AQUEOUS COATING SELECTOR



ITEM CODE	PRODUCT DESCRIPTION	PERFORMANCE CATEGORIES AND RATINGS									
		DRY TIME	GLOSS	RUB RES.	HEAT RES.	UV COATABLE	FOIL STAMP	GLUEABLE	RE-COATABLE	E.C.S.*	W&T CAPABLE
AC0900	INXKOTE LM FDA MATTE COAT	2	4	3	3	YES	YES	YES	YES	YES	YES
AC0901	INXKOTE LM FDA GP GLOSS W&T COAT	2	3	3	3	YES	YES	YES	YES	YES	YES
AC0902	INXKOTE LM FDA HI RUB AQ COAT	2	3	2	3	NO	NO	NO	NO	YES	NO
AC0903	INXKOTE LM FDA HV GLOSS AQ COAT	3	3	3	3	NO	NO	NO	NO	YES	NO
AC0904	INXKOTE LM FDA ULTRA HI RUB AQ COAT	3	4	1	3	NO	NO	NO	NO	NO	NO
AC0905	INXKOTE LM SF GLOSS AQ COAT	3	3	3	3	YES	YES	YES	YES	YES	NO
AC0906	INXKOTE LM ECS HI COF AQ COAT	3	3	3	3	YES	YES	YES	YES	YES	NO
AC0907	INXKOTE LM GLOSS W&T AQ COAT	2	3	3	3	YES	YES	YES	YES	NO	YES
AC0908	INXKOTE LM S/F H RUB ECS AQ COAT	3	3	2	3	NO	NO	NO	NO	YES	NO
AC0909	INXKOTE LM MID RANGE H R AQ COAT	3	3	3	2	NO	NO	NO	NO	NO	NO
AC0910	INXKOTE LM SF SATIN AQ COAT	2	4	3	3	YES	YES	YES	YES	YES	YES
AC0911	INXKOTE LM SYN SUB AQ COAT	2	3	3	3	YES	YES	YES	YES	NO	NO
AC0912	INXKOTE LM IN-LINE UV PRIMER	3	3	4	3	YES	YES	YES	YES	NO	NO
AC0915	INXKOTE LM LOW VOC W&T UV PRIMER	2	3	3	3	YES	YES	YES	YES	NO	YES

1 = BEST 5 = NOT RECOMMENDED

*ENCLOSED CHAMBERED SYSTEM (DOCTOR BLADES)

GLOSS	
60 DEGREES	
RATE	VALUE
1	85-95
2	75-84
3	55-74
4	35-54
5	< 35

RUB RESISTANCE	
SUTHERLAND	
RATE	VALUE
1	400 CYCLES
2	200 CYCLES
3	100 CYCLES
4	50 CYCLES
5	< 50 CYCLES

DRY RATE	
200 LINE ANILOX	
RATE	VALUE
1	V-FAST
2	FAST
3	FAIR
4	SLOW
5	V-SLOW

HEAT RESISTANCE	
SENT - 10 PSI/5 SEC	
RATE	VALUE
1	500 F
2	400 F
3	300 F
4	280 F
5	< 180 F

ABOVE NUMBERS ARE FROM LAB ANALYSIS. COMMERCIAL APPLICATIONS MAY VARY.